

MARBLEWHITE® (Lucerne Valley, CA)

ground limestone

MARBLEWHITE® limestone products are characterized by good brightness with controlled particle size and particle packing. MARBLEWHITE® limestone finds use as an extender in cultured marble, stuccos and building products.

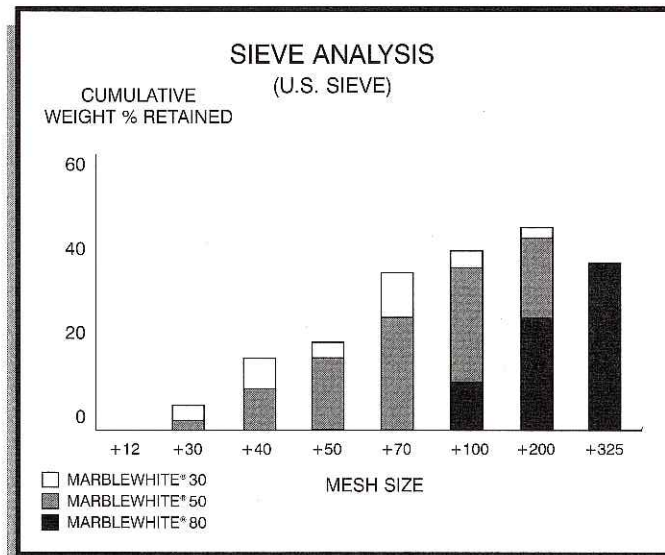
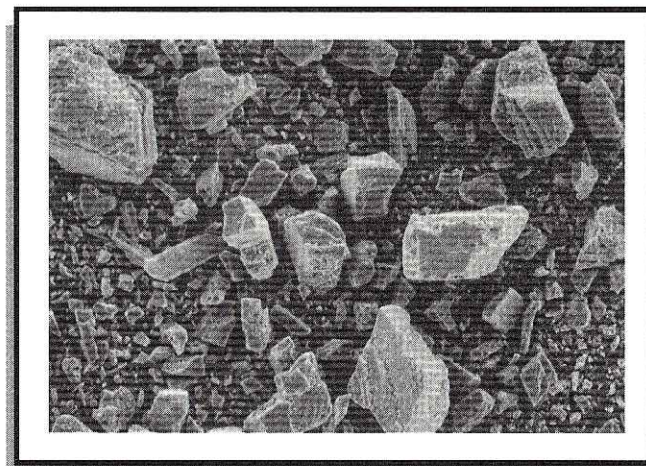
MARBLEWHITE® limestone is manufactured from a high quality calcite deposit at our Lucerne Valley, CA facility. Statistical process control (SPC) is used to insure the highest standards of product quality and consistency. *Product advantages include:* low cost and narrow control limits.

Typical Properties

	Marblewhite		
	30	50	80
Specific Gravity	2.7	2.7	2.7
Dry Brightness (Hunter Y, Rd value)	84	91	92
Bulk Density	74.5	74.5	60.6
	(pounds/ft ³)	(grams/cc)	0.99
Tap Density	112.6	112.6	109.5
	(pounds/ft ³)	(grams/cc)	1.75

Chemical Composition (typical—before treatment)

Calcium Carbonate	CaCO ₃	98%
Magnesium Carbonate	MgCO ₃	1.2%
Iron As	Fe ₂ O ₃	0.025%
Moisture (% weight loss @ 110° C)	H ₂ O	<0.02%



All products are sold on the understanding that the user is solely responsible for determining their suitability for the intended use. All information given and recommendations made herein are based upon our research and are believed to be accurate, but no guarantee, either expressed or implied, is made with respect thereto or with respect to the infringement of any patent. SMI MAKES NO WARRANTY OF MERCHANTABILITY OR SUITABILITY FOR ANY PARTICULAR PURPOSE IN CONNECTION WITH ANY SALE OF THE PRODUCTS DESCRIBED HEREIN. Inconsistent terms and conditions contained in Buyer's purchase order shall not be binding on SMI/BMI unless reflected in writing signed by SMI/BMI's representative. This information is not to be copied, used in evidence, released for publication or public distribution without written permission from Specialty Minerals Inc./Barretts Minerals Inc.

Sales Offices

Bethlehem, PA • (800) 801-1031
 Lakewood, CA • (800) 255-5832
 Adams, MA • (800) 225-1156
www.mineralstech.com

MW0010599
 MARBLEWHITE® is a registered trademark of
 Minerals Technologies Inc. or its subsidiaries.
 ©Specialty Minerals Inc. 1999