

MISSISSIPPI

PERFORMANCE MINERALS FOR SPECIALTY APPLICATIONS SUPER-PFLEX[®] MS Precipitated Calcium Carbonate (PCC)

SUPER-PFLEX[®] MS PCC (precipitated calcium carbonate) is a surface coated, fine particle size, precipitated calcium carbonate with a unique crystal morphology and very narrow particle size distribution. This combination of characteristics allows SUPER-PFLEX[®] MS PCC to impart improved properties to a polymer composite or compound over those obtained with a ground product. Applications include extruded rigid PVC profiles and substrates, injection molded housings and fittings, and small diameter conduit and pipe.

SUPER-PFLEX[®] MS PCC differs from our standard SUPER-PFLEX[®] 100 and SUPER-PFLEX[®] 200 PCC products with a slightly larger particle size distribution and a stearic acid coating level specifically tailored for the product.

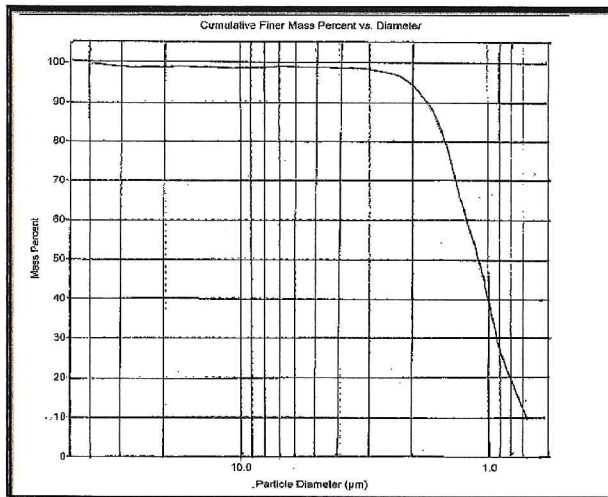
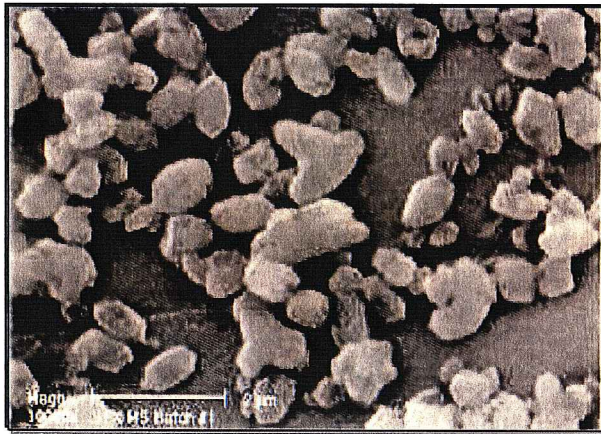
Typical Properties

Average Particle Size (microns)	1.1
+325 Mesh Residue, (weight percent)	0.03
Specific Gravity	2.7
Dry Brightness (Hunter Y, Rd value)	94
Bulk Density (pounds /ft ³)	35
(grams/cc)	0.56
Surface Area (meters ² /grams)	5.5

Chemical Composition

(typical – before treatment)

Calcium Carbonate	CaCO ₃	98%
Magnesium Carbonate	MgCO ₃	1%
Iron as	Fe ₂ O ₃	<0.1%
Moisture	H ₂ O	<0.2%
(% weight loss @ 110° C)		



SUPER-PFLEX[®] MS is listed under the NSF generic listing program for CaCO₃

All products are sold on the understanding that the user is solely responsible for determining their suitability for the intended use. All information given and recommendations made herein are based upon our research and are believed to be accurate, but no guarantee, either expressed or implied, is made with respect thereto or with respect to the infringement of any patent. SMI MAKES NO WARRANTY OF MERCHANTABILITY OR SUITABILITY FOR ANY PARTICULAR PURPOSE IN CONNECTION WITH ANY SALE OF THE PRODUCTS DESCRIBED HEREIN. Inconsistent terms and conditions contained in Buyer's purchase order shall not be binding on SMI/BMI unless reflected in writing signed by SMI/BMI's representative. This information is not to be copied, used in evidence, released for publication or public distribution without written permission from Specialty Minerals Inc./Barretts Minerals Inc.

Sales Offices

Bethlehem, PA • 877-229-9653
www.mineraltech.com

SUPER-PFLEX[®] is a registered trademark of Minerals Technologies Inc. or its subsidiaries
© Specialty Minerals Inc. 2002