

CALOPAKE® Extra Light precipitated calcium carbonate (pcc)

The CALOPAKE® precipitated calcium carbonate (pcc) grades, manufactured at Specialty Minerals Lifford, are microcrystalline white powders characterised by their high chemical purity, controlled particle shape and particle size distribution.

The CALOPAKE® Extra Light pcc grade consists of agglomerated scalenohedral calcitic crystals.

CALOPAKE® Extra Light pcc meets the requirements of the current British, European and United States Pharmacopoeia. It also meets the requirements of the Food Chemicals Codex and the Miscellaneous Food Additives regulations E170i.

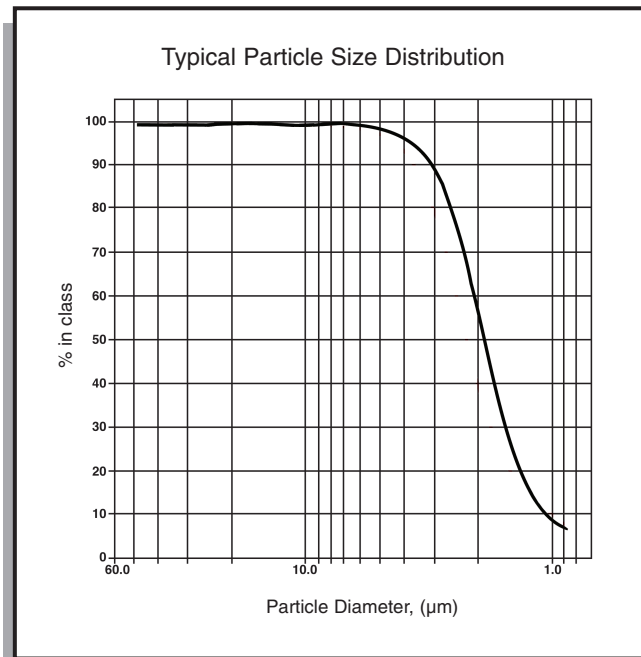
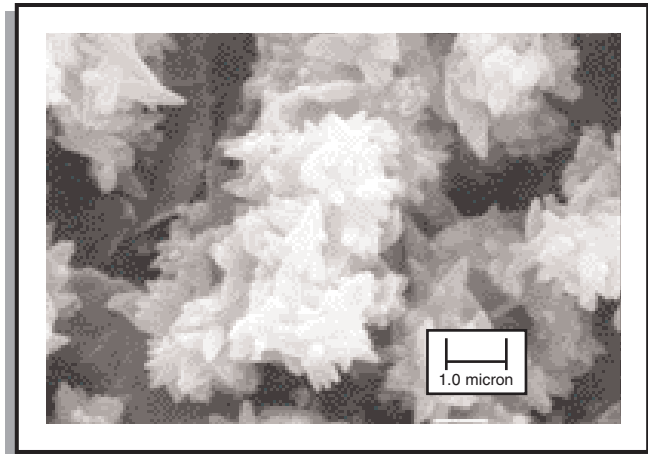
APPLICATIONS:

One of CALOPAKE® Extra Light pcc's main applications is the detackification of natural rubber, where it is used in surgical and laboratory gloves, condoms, rubber crumbs and as a slab dip.

CALOPAKE® Extra Light pcc is recommended for readily dispersible dry beverage mixes and coffee lighteners.

CALOPAKE® Extra Light pcc is particularly effective in the fortification of dairy, soymilk and non-acidic juice beverages. Its small particle size and controlled particle shape gives good suspension stability, taste and mouth-feel.

The crystal structure of CALOPAKE® Extra Light pcc makes it useful in the manufacture of calcium salts or in neutralization reactions.



Test	Units	CALOPAKE® Extra Light pcc
Appearance		White powder
Apparent density	g/ml	0.36 to 0.44
Loss on drying (4 hours @ 200°C)	%	2.0 max.
+45 µm (British std) sieve residue	%	0.15 max.
pH		10.5 max.
Colour L value		98.0 min.

CALOPAKE® Extra Light pcc is supplied to the above specification unless otherwise formally agreed.

PACKAGING:

CALOPAKE® Extra Light pcc is available packed in 25kg paper sacks which are palletised and shrink wrapped into 1tonne unit loads.

We are happy to discuss alternative packaging to meet specific customer requirements.

MANUFACTURING:

Specialty Minerals Inc. (SMI) is a wholly owned subsidiary of Minerals Technologies Inc. and is the world's largest producer of precipitated calcium carbonate (pcc).

As part of SMI's commitment to quality, the Lifford Site Quality Management System is certified to BS EN ISO 9001:2000 and the Environmental Management System certified to BS EN ISO 14001:1996.

In addition the manufacture of pcc is covered by a Certificate of Suitability for pharmaceutical applications.

STORAGE AND HEALTH & SAFETY:

Refer to the separate Safety Data Sheet, which is available upon request.

CONTACT DETAILS:**Specialty Minerals**

Lifford Lane, Birmingham B30 3JW. UK. Telephone: +44 121 252 4513. Fax: +44 121 252 4556.
E-mail: spcc.sales.UK@mineralstech.com Web site: www.mineralstech.com

