

## CALOPAKE® 5970

### precipitated calcium carbonate (pcc)

The CALOPAKE® precipitated calcium carbonate (pcc) grades, manufactured at Specialty Minerals Lifford, are microcrystalline white powders characterised by their high chemical purity, controlled particle shape and particle size distribution.

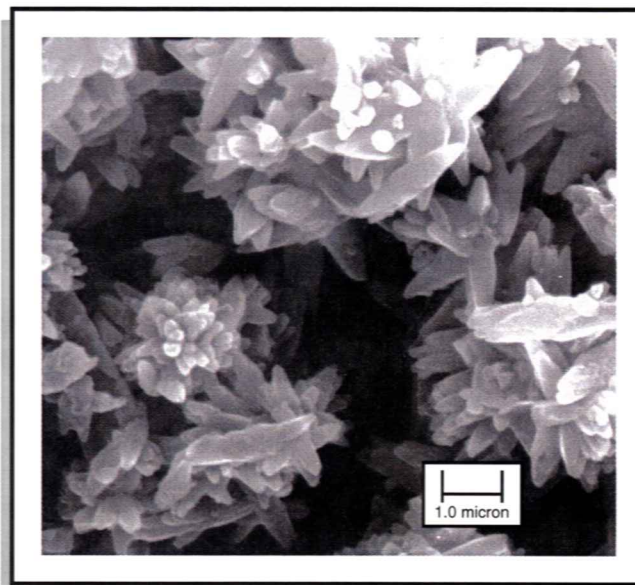
CALOPAKE® 5970 pcc consists of agglomerated scalenohedral calcitic crystals that exhibit high opacifying power and brightness. The crystal structure of the product results in a high absorption capacity and makes it easy to disperse.

#### APPLICATIONS:

The CALOPAKE® 5970 pcc grade is utilised in the paper industry as a filler where it offers significant advantages over other fillers. It provides higher sheet opacity and brightness, increased bulk, increased smoothness and the potential for the replacement of expensive additives. CALOPAKE® 5970 pcc can be used in a variety of other applications including:

- Surface Coatings
- Paper Coating
- Fermentation
- Toothpaste
- Nutrient Source

CALOPAKE® 5970 pcc manufactured at the Specialty Minerals Lifford, plant in Birmingham is produced to the same specification as the ALBACAR® 5970 pcc from Specialty Minerals' Adams, Massachusetts plant in the U.S., giving users two sources of supply for this product.



The Specialty Minerals Lifford Site Quality Management System is Certified to ISO 9002:1994.

Test	Units	CALOPAKE® 5970 pcc
Appearance		White powder
Apparent density	g/ml	0.40 to 0.56
Aragonite content	%	50 max.
+45 µm (British standard) sieve residue	%	0.15 max.
Residual (Sturge) alkalinity	ml of 1M HC1	0.5 max.
pH		10.5 max.

CALOPAKE® 5970 pcc is supplied to the above specification unless otherwise formally agreed.

Additional Typical data on CALOPAKE® 5970 pcc		
Surface area	m <sup>2</sup> /g	8
Mean particle size	µm	2.0
Flow point	mls H <sub>2</sub> O/15g	18
Colour L value		98

All products are sold on the understanding that the user is solely responsible for determining their suitability for the intended use. All information given and recommendations made herein are based upon our research and are believed to be accurate, but no guarantee, either expressed or implied, is made with respect thereto or with respect to the infringement of any patent. SMI MAKES NO WARRANTY OF MERCHANTABILITY OR SUITABILITY FOR ANY PARTICULAR PURPOSE IN CONNECTION WITH ANY SALE OF THE PRODUCTS DESCRIBED HEREIN. Inconsistent terms and conditions contained in Buyer's purchase order shall not be binding on SMI/BMI unless reflected in writing signed by SMI/BMI's representative. This information is not to be copied, used in evidence, released for publication or public distribution without written permission from Specialty Minerals Inc./Barretts Minerals Inc.

#### Sales Office

Lifford Lane, Birmingham B30 3JW, United Kingdom  
Tel: +44 (0)121 252 4513. Fax: +44 (0)121 252 4556  
spcc.sales.UK@mineralstech.com  
www.mineralstech.com

Lifford Ref: LIT J045 Doc No 1282 Rev 0.00  
CALOPAKE® and ALBACAR®  
are registered trademarks of  
Minerals Technologies Inc. or its subsidiaries.  
©Specialty Minerals Inc. 2000