



## ATF Series (Adams, MA) screened limestone products

Specialty Minerals ATF screened limestone products are of high purity and characterized by controlled brightness, particle size and density. ATF screened limestone products are used in a variety of applications such as tile and sheet flooring, roofing and other building products. ATF product top sizes range from 10 to 40 mesh (U.S.).

Consistent quality of ATF screened limestone products is assured by process control on all aspects of their manufacture, from mining the calcite ore to milling and final packaging. All ATF products are manufactured from a high quality deposit of natural calcite located in Adams, MA. All ATF screened limestone products have the same chemical and mineralogical composition.

### TYPICAL PROPERTIES

Specific Gravity	2.7
Dry Brightness (Hunter Y, Rd Value)	82
Bulk Density (pounds/ft <sup>3</sup> )	90-95
(grams/cc)	1.44-1.52

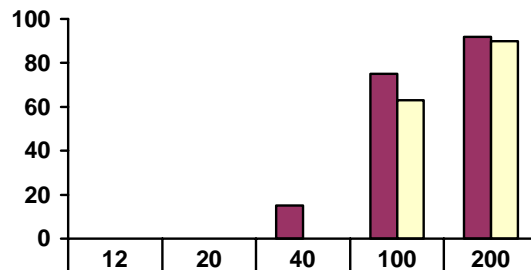
### CHEMICAL COMPOSITION (typical)

Calcium Carbonate	CaCO <sub>3</sub>	96%
Magnesium Carbonate	MgCO <sub>3</sub>	1%
Moisture (% weight loss @ 110° C)	H <sub>2</sub> O	0.2%



### SIEVE ANALYSIS (U.S. SIEVE)

CUMULATIVE  
WEIGHT % RETAINED



	12	20	40	100	200
■ ATF-20	0	Trace	15	75	92
■ ATF-40	0	0	Trace	63	90

All products are sold on the understanding that the user is solely responsible for determining their suitability for the intended use. All information given and recommendations made herein are based upon our research and are believed to be accurate, but no guarantee, either expressed or implied, is made with respect thereto or with respect to the infringement of any patent. SMI MAKES NO WARRANTY OF MERCHANTABILITY OR SUITABILITY FOR ANY PARTICULAR PURPOSE IN CONNECTION WITH ANY SALE OF THE PRODUCTS DESCRIBED HEREIN. Inconsistent terms and conditions contained in Buyer's purchase order shall not be binding on SMI/BMI unless reflected in writing signed by SMI/BMI's representative. This information is not to be copied, used in evidence, released for publication or public distribution without written permission from Specialty Minerals Inc./Barretts Minerals Inc.

#### Sales Offices

Bethlehem, PA • 800-801-1031  
www.mineralstech.com

ATF Series

©Specialty Minerals Inc. 1/2004